



Certificate of Analysis

Customer:

Ancient Aromas, LLC

1051 Floyd Drive

Lexington, KY 40505

Collected Date:

Received Date: **8/16/2021**

COA Released: **8/18/2021**

Comments:

Sample ID: **210816025**

Order Number: **CB210816011**

Sample Name: **P081621**

External Sample ID:

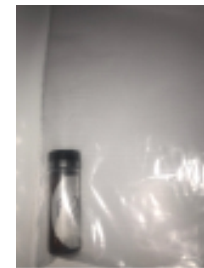
Batch Number:

Product Type: **Edible**

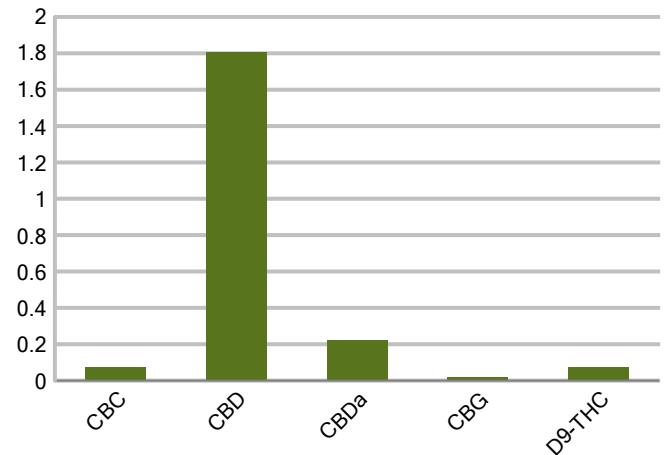
Sample Type: **Edible**

CANNABINOID PROFILE

Analyte	LOQ (%)	% weight	mg/g
CBC	0.01	0.074	0.738
CBD	0.01	1.807	18.07
CBDa	0.01	0.225	2.252
CBDV	0.01	ND	ND
CBG	0.01	0.017	0.166
CBGa	0.01	ND	ND
CBN	0.01	ND	ND
d8-THC	0.01	ND	ND
d9-THC	0.01	0.074	0.736
THCa	0.01	ND	ND
Total Cannabinoids		2.196	21.96
Total Potential THC		0.074	0.736
Total Potential CBD		2.005	20.05
Total Potential CBG		0.017	0.166



Cannabinoids (% weight)



Ratio of Total Potential CBD to Total Potential THC 27.10 : 1

Ratio of Total Potential CBG to Total Potential THC 0.23 : 1

**Total Cannabinoids refers to the sum of all cannabinoids detected.*

**Total Potential CBD = (0.877 x CBDa) + CBD. *Total Potential THC = (0.877 x THCa) + THC. *Total Potential CBG = (0.877 x CBGa) + CBG.*

**Total Potential THC/CBD are calculated to take into account the loss of an acid group during decarboxylation.*



PJLA
Testing
Accreditation #109588

Authorized Signature

Laboratory Manager

Jamie Hobgood

08/18/2021 9:23 AM

DATE

This product has been tested by CannaBusiness Laboratories using validated testing methodologies and a quality system. Values reported relate only to the product tested. CannaB Laboratories makes no claims as to the efficacy, safety, or other risks associated with any detected or non-detected levels of any compounds reported herein. This Certificate shall be reproduced except in full, without the written permission of CannaBusiness Laboratories. Uncertainty information is available on request. Photo is of sample received by the lab and may vary from final packaging. The results apply to the sample as received. ISO/IEC 17025:2017 Accredited.



CannaBusiness Laboratories, LLC

2554 Palumbo Dr. Lexington, KY 40509

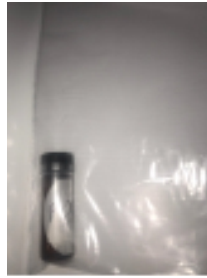


Sample ID: 210816025
Sample Name: P081621
Sample Type: Edible

Certificate of Analysis

Customer

Ancient Aromas, LLC
1051 Floyd Drive
Lexington, KY 40505



Overall Batch Results	
Pesticide	Moisture Content
Potency	Water Activity
Mycotoxins	Heavy Metals
Microbial Screen	Residual Solvents
Terpenoids	

Sample Name: P081621
Sample ID: 210816025
Product Type: Edible
Sample Type: Edible
Collected Date:
Received Date: 08/16/2021
Batch Number:
Batch Size:
Sample Size:
COA released: 08/18/2021 9:23 AM

Potency (mg/g)	
Date Tested: 08/18/2021	Method: CB-SOP-028
Instrument:	

0.074 % Total THC	2.005 % Total CBD	2.196 % Total Cannabinoids	21.96 mg/g Total Cannabinoids
-----------------------------	-----------------------------	--------------------------------------	---

Analyte	Result	Units	LOQ	Result	Units
CBC (Cannabichromene)	0.074	%	0.010	0.738	mg/g
CBD (Cannabidiol)	1.807	%	0.010	18.07	mg/g
CBDa (Cannabidiolic Acid)	0.225	%	0.010	2.252	mg/g
CBDV (Cannabidivarin)	ND	%	0.010	ND	mg/g
CBG (Cannabigerol)	0.017	%	0.010	0.166	mg/g
CBGa (Cannabigerolic Acid)	ND	%	0.010	ND	mg/g
CBN (Cannabinol)	ND	%	0.010	ND	mg/g
D8-THC (D8-Tetrahydrocannabinol)	ND	%	0.010	ND	mg/g
D9-THC (D9-Tetrahydrocannabinol)	0.074	%	0.010	0.736	mg/g
THCa (Tetrahydrocannabinolic Acid)	ND	%	0.010	ND	mg/g



Authorized Signature

J. Hobgood
Laboratory Manager

Jamie Hobgood

08/18/2021 9:23 AM

Date Time

NT = Not tested, ND = Not detected; LOQ = Limit of Quantitation; <LOQ = Detected; >ULOL = Above upper limit of linearity; CFU/g = Colony forming units per 1 gram; TNTC = Too numerous to count

CannaBusiness Laboratories
License # P-0059: (859)-514- 6999 <https://www.cannabusinesslabs.us>

This product has been tested by CannaBusiness Laboratories using validated testing methodologies and a quality system. Values reported relate only to the product tested. CannaBusiness Laboratories makes no claims as to the efficacy, safety, or other risks associated with any detected or non-detected levels of any compounds reported herein. This Certificate shall not be reproduced except in full, without the written permission of CannaBusiness Laboratories. Uncertainty information is available on request. Photo is of sample received by the lab and may vary from final packaging. The results apply to the sample as received. ISO/IEC 17025:2017 Accredited.